

Navigation and Transportation Work Group Meeting 5

Orange County Department on Aging
2012-2017 Master Aging Plan



Welcome!

Introductions

- Name
- Organization, Affiliation, or Interest

Work Group Process: Meetings 1 and 2

- **Meeting 1: “Where We’ve Been and Where We’re Going”**
 - Review of MAP Process
 - Overview of work group process
 - Identified important work group subtopics
 - **Homework:** Research questions: what services exist or are possible? Does it exist in Orange County already? Note adequacy, quality, and equity. What more/different is needed?
- **Meeting 2: “Barriers and Facilitators of Success”**
 - Discussion of what services need protection, need to be improved, and need to be expanded
 - Group brainstorm on possible solutions for each subtopic
 - Split into subgroups
 - **Homework:** Identified barriers and facilitators of solution success

Meetings 3 and 4

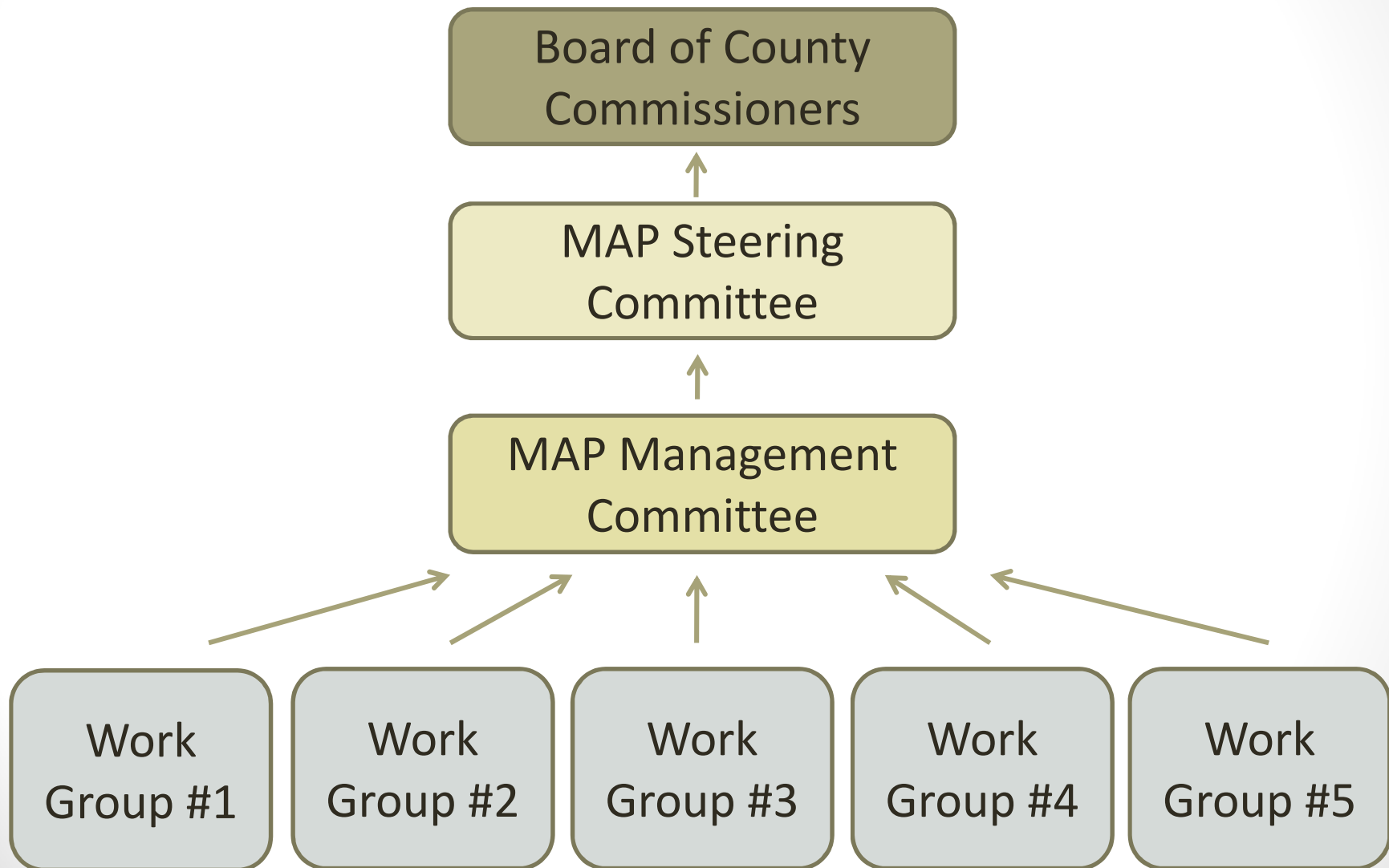
- **Meeting 3: “Focus on Solutions”**
 - Subgroups reviewed their research findings, selected viable solutions
 - Group brainstormed on strategies for implementation
 - **Homework:** Evaluated solutions based on several criteria
- **Meeting 4: “Importance and Feasibility: Drilling Down to Objectives”**
 - Reviewed research findings
 - Detailed problems and solutions
 - **Homework:** Prioritization survey

Meeting 5

- **Meeting 5: “What Will Success Look Like?”**
 - Review prioritization survey results
 - Finalize work group recommendations for MAP objectives and strategies
 - Submit work to MAP Management Team!



MAP Participant Structure



Survey Results – All Problems

Rankings:

- Problem 8 81 points
 - Need both long-term and short-term funding sources.
- Problem 9 71 points
 - Need to coordinate plans between the various county, town, and other regional departments.
- Problem 2 66 points
 - Need to ensure that rural areas residents have access to emergency services during weather emergencies.
- Problem 1 61 points
 - Need to expand public transportation system into rural areas of Orange County
- Problem 6 59 points
 - Need to keep people driving safely for as long as possible.

Survey Results – All Problems

Rankings:

- Problem 7 57 points
 - Need to connect existing infrastructure in both urban and rural parts of county.
- Problem 3 46 points
 - Need connections between senior centers and other business at midday.
- Problem 5 40 points
 - Need weekend transportation.
- Problem 10 38 points
 - Lack of available support services to assist people with identifying appropriate routes/services to use (includes issues of language barriers and confusing maps/schedules).
- Problem 4 33 points
 - Need connections to other counties and areas of the Triangle region.

Survey Results – Problem 8

- Solution 1 24 points
- Solution 4 19 points
- Solution 2 18 points
- Solution 3 9 points

Comments:

- “Statement 1 is important but needs a purpose, which is present in statement 4 - in other words, instead of just applying for grant funding, identifying something in need of grant funding seems more salient”
- “Maybe #4 could be the advocacy target for obtaining #2”

Survey Results – Problem 9

- Solution 1 13 points
- Solution 2 13 points

Comments:

- We have a member of the OCDOA Aging Transitions team recently appointed to the OUTBoard.
- “I honestly don't think that too many of these things could happen without a "champion". “
- Costs: Estimated between \$30,000-75,000 for a mobility manager; suggested applying for foundation grants.

Survey Results – Problem 2

Comments:

- No information on cost
- Emphasis on benefit to public health
- Some said too broad or could fit elsewhere in discussion of seniors' emergency needs

- Note: We decided to try to move this to a different work group. Will note its high priority.

Survey Results – Problem 1

- Solution 2 42 points
- Solution 5 42 points
- Solution 4 39 points
- Solution 6 36 points
- Solution 3 29 points
- Solution 1 25 points

- Comments:
 - “I feel the statement in number 2 cuts across most of the other issues - it reads as an umbrella statement for the others”
 - Map (#4) would be a low-cost option
 - Park and ride lots (#6) would be efficient and serve seniors as well as others. Could share parking lot with existing building.
 - An ITN America affiliate would cost \$150-250,000 to start and needs an urban service area of 200,000.

Survey Results – Problem 6

- Solution 5 57 points
 - Solution 4 51 points
 - Solution 2 50 points
 - Solution 7 36 points
 - Solution 8 34 points
 - Solution 1 28 points
 - Solution 3 26 points
 - Solution 6 22 points
-
- Comments:
 - About # 2: “Supports crucial sensitivity involved in culture change and crosscuts needs of distinctively different aging sectors.”
 - This list of solutions was about more than just driving
 - Broaden senior driving wellness programs to senior wellness for community mobility?

Survey Results – Problem 7

- Solution 1 68 points
- Solution 2 59 points
- Solution 4 46 points
- Solution 8 46 points
- Solution 5 41 points
- Solution 7 33 points
- Solution 6 31 points
- Solution 10 31 points
- Solution 3 29 points
- Solution 9 11 points

- Comments:
 - “#1 and #2 seem to be similar and could be combined as the overarching priority. Note: while I support the development of more bike lanes in the northern part of the county, I question how pertinent this is specifically to the MAP.”
 - Connect centralized transit hub with park and ride lots objective

Survey Results – Problem 3

- Solution 1 15 points
- Solution 2 15 points

- Comments:
 - Moving bus stops might be easier of the two and could raise awareness of seniors' needs in community
 - Someone was part of a partnership between a senior housing unit and local grocery that provided weekly transportation for free in Buncombe County as long as had 9-15 people per trip.

Survey Results – Problem 5

Comments:

- Cost for weekend transportation: “\$18.50 per hour plus .555 per mile for one-on-one transportation if using a paid companion. If transportation is provided by a volunteer, the service is offered at no charge if the transportation is within Orange County.”
- Some felt this solution should not be included, others emphasized weekend recreational needs

Survey Results – Problem 10

- Solution 1 15 points
- Solution 2 7 points

- Comments:
 - Senior centers provide existing infrastructure and Aging Transitions has already begun #1
 - Suggestion to move County maps recommendation here, too

Survey Results – Problem 4

- Comments:
 - “Typically, it costs \$90-100/hour to operate a fixed route service.”
 - “Well, I think there should be some general thrust in the MAP toward more regional collaboration. This is one of those kinds of recommendations - improve services to seniors through regional advocacy and collaboration”
- Include solution to support existing services?
 - 3 said yes, 4 said no
 - If yes, need to be made more specific – support aging-related initiatives?

Draft of Objectives and Strategies

- Now that we have reviewed our priorities, please provide feedback on:
 - The objectives and strategies' rearrangement
 - Their new wording
 - Are they faithful to our discussions? Are they clear and logical?
 - Are we focused on older adults?
- Under which of the 8 MAP goals should we place each objective?

Thank you for your participation!

Public comment sessions:

Tues, Mar 13	10 am	Seymour Center
Tues, Mar 15	7 pm	Central Orange Senior Center
Mon, Mar 19	11 am	Central Orange Senior Center
	6 pm	Seymour Center
Wed, Mar 21	2 pm	Century Center, Carrboro
	6 pm	Lattisville Grove Church in Hurdle Mills
Thurs, Mar 22	10 am	McCoys Temple in Efland

